



Lecture 1

Introduction

Welcome to Data 8



- John DeNero



- David Wagner



- Ani Adhikari

Course Website

<http://data8.org/sp18>

Data Science

What is Data Science?

Drawing useful conclusions from data using computation

- **Exploration**

- Identifying patterns in information
- Uses visualizations

- **Inference**

- Quantifying whether those patterns are reliable
- Uses randomization

- **Prediction**

- Making informed guesses
 - Uses machine learning
-

Connector Courses

- Data science is driven by applications
- Every data-driven subject brings new challenges
- Connectors are small, independent courses taught by Berkeley faculty who are excited to share their expertise

<http://data8.org/connector>



LEGALST 88

Taking Measure of the Justice System



STAT 88

Probability & Mathematical Statistics



COMPSCI 88

Computational Structures in DS



COGSCI 88

Data Science & the Mind

**DATA SCIENCE
CONNECTOR
COURSES**

Companion Courses for Data 8



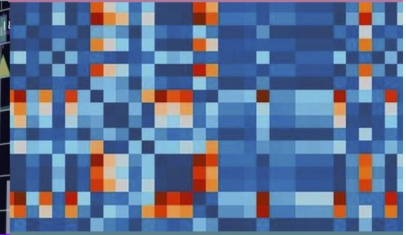
PSYCH 88

DS for Cognitive Neuroscience



UGBA 96- 4 & 5

Data & Decisions



STAT 89A

Linear Algebra for Data Science



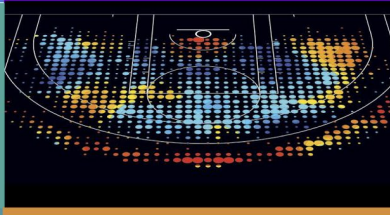
GEOG 88

Data Science Applications in Geography



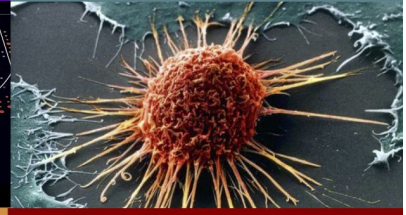
L&S 88-1

Children in the Developing World



L&S 88-2

Sports Analytics



MCB 88

Immunotherapy of Cancer

Course Structure

Parts of Data 8

- Lecture has a screencast, but it's better to attend
- Participation grade: attend a substantial number of lectures
- Weekly lab assignments
- Weekly homework assignments & three projects
- (U)GSI office hours Monday-Thursday 11-5 (starts next week)
- Midterm during lecture hour on Friday March 9
- Final exam on Tuesday May 8, 3 pm to 6 pm

Details are in data.org/sp18/policies.html

Getting Help

- Ask a friend
 - Ask on Piazza
 - Come to office hours
-

Course Policies

Learning

Community

Course Staff

<http://data8.org/sp18/policies.html>

Collaboration

Asking questions is greatly encouraged

- Discuss questions with each other (except exams)
- Submit lab assignments individually; discuss in lab
- Submit homework individually, but feel free to discuss
- Submit projects individually or with a partner **from your lab**

The Limits of collaboration

- Don't share solutions with each other (except project partners)
 - Copying or other dishonesty will result in failing the course
-

Example

(Demo)